



# ADAMTS-16 Polyclonal Antibody

|                           |   |
|---------------------------|---|
| <b>Catalog No</b>         | YP-Ab-02480   |
| <b>Isotype</b>            | IgG   |
| <b>Reactivity</b>         | Human;Mouse   |
| <b>Applications</b>       | IHC;IF;ELISA  |
| <b>Gene Name</b>          | ADAMTS16  |
| <b>Protein Name</b>       | A disintegrin and metalloproteinase with thrombospondin motifs 16   |
| <b>Immunogen</b>          | Synthesized peptide derived from ADAMTS-16 . at AA range: 440-520   |
| <b>Specificity</b>        | ADAMTS-16 Polyclonal Antibody detects endogenous levels of ADAMTS-16 protein.   |
| <b>Formulation</b>        | Liquid in PBS containing 50% glycerol, 0.5% BSA and 0.02% sodium azide.   |
| <b>Source</b>             | Polyclonal, Rabbit,IgG  |
| <b>Purification</b>       | The antibody was affinity-purified from rabbit antiserum by affinity-chromatography using epitope-specific immunogen.   |
| <b>Dilution</b>           | IHC: 1/100 - 1/300. ELISA: 1/40000.. IF 1:50-200  |
| <b>Concentration</b>      | 1 mg/ml   |
| <b>Purity</b>             | ≥90%  |
| <b>Storage Stability</b>  | -20°C/1 year  |
| <b>Synonyms</b>           | ADAMTS16; KIAA2029; A disintegrin and metalloproteinase with thrombospondin motifs 16; ADAM-TS 16; ADAM-TS16; ADAMTS-16   |
| <b>Observed Band</b>      |   |
| <b>Cell Pathway</b>       | Secreted, extracellular space, extracellular matrix .   |
| <b>Tissue Specificity</b> | Expressed in fetal lung and kidney and in adult prostate and ovary.   |
| <b>Function</b>           | cofactor: Binds 1 zinc ion per subunit., domain: The conserved cysteine present in the cysteine-switch motif binds the catalytic zinc ion, thus inhibiting the enzyme. The dissociation of the cysteine from the zinc ion upon the activation-peptide release activates the enzyme., domain: The spacer domain and the TSP type-1 domains are important for a tight interaction with the extracellular matrix., PTM: The precursor is cleaved by a furin endopeptidase., similarity: Contains 1 disintegrin domain., similarity: Contains 1 peptidase M12B domain., similarity: Contains 1 PLAC domain., similarity: Contains 6 TSP type-1 domains., tissue specificity: Expressed in fetal lung and kidney and in adult prostate and ovary., |
| <b>Background</b>         | This gene encodes a member of the ADAMTS (a disintegrin and metalloproteinase with thrombospondin motifs) protein family. ADAMTS family members share several distinct protein modules, including a propeptide region, a metalloproteinase domain, a disintegrin-like domain, and a thrombospondin type 1   |



(TS) motif. Individual members of this family differ in the number of C-terminal TS motifs, and some have unique C-terminal domains. The encoded preproprotein is proteolytically processed to generate the mature protein, which may inhibit chondrosarcoma cell proliferation and migration. This gene may regulate blood pressure. [provided by RefSeq, May 2016],

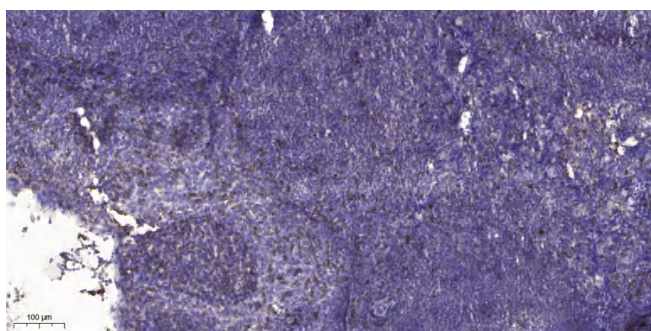
**matters needing attention**

Avoid repeated freezing and thawing!

**Usage suggestions**

This product can be used in immunological reaction related experiments. For more information, please consult technical personnel.

## Products Images



Immunohistochemical analysis of paraffin-embedded human tonsil. 1, Antibody was diluted at 1:200(4° overnight). 2, Tris-EDTA,pH9.0 was used for antigen retrieval. 3,Secondary antibody was diluted at 1:200(room temperature, 30min).